

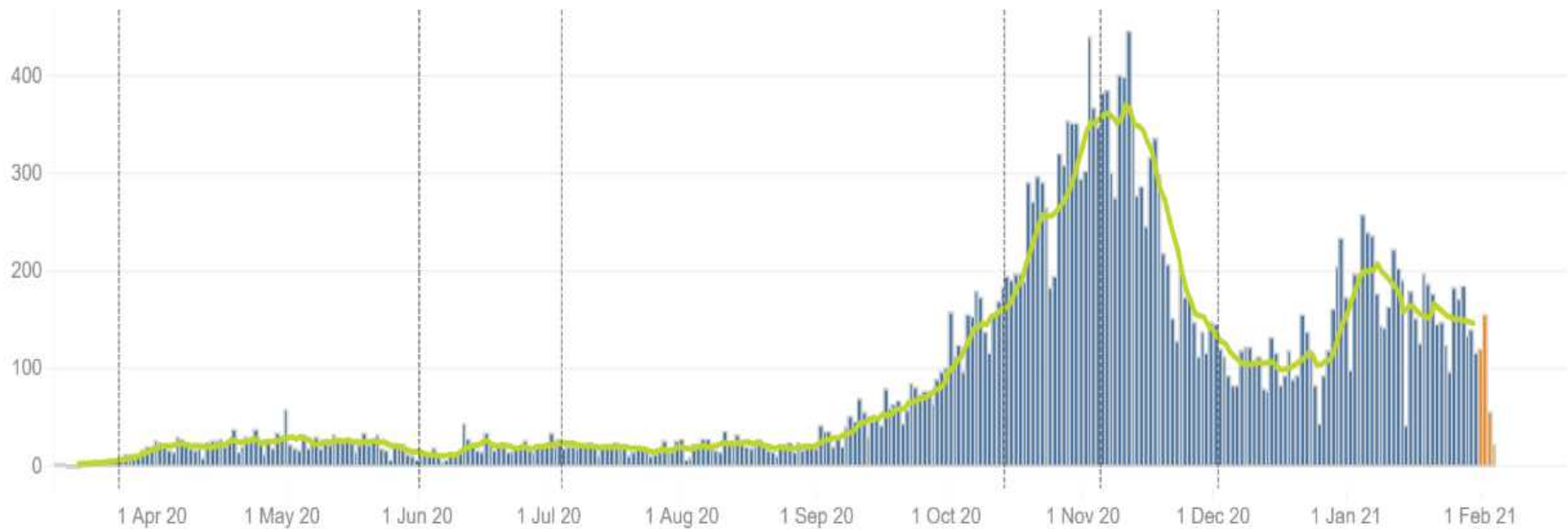
Covid-19 Update: Health and Adult Social Care Scrutiny Panel

Jane O'Donnell
Emily Parry-Harries

Cumulative Position

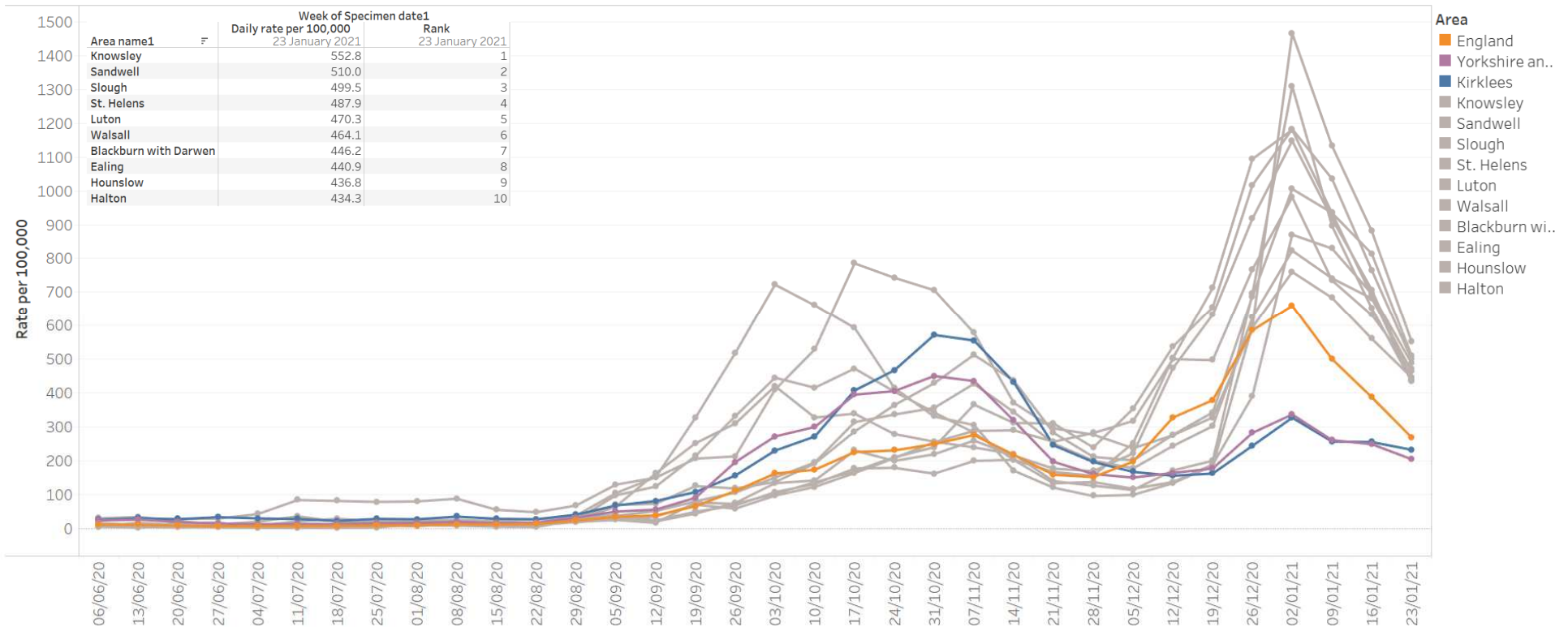
- Number of all-time confirmed cases in Kirklees: 27,915
- Cases in the last week: 231
- Latest weekly rank: 94/149
- Note: these are correct as of 05.02.2021

Number of daily cases of COVID-19 in Kirklees. **Green line** ◆ shows the 7-day rolling average. Data for the last 4 days is subject to change (coloured **orange** ◆). Annotations show national easing of restrictions and key national/local measures put in place.

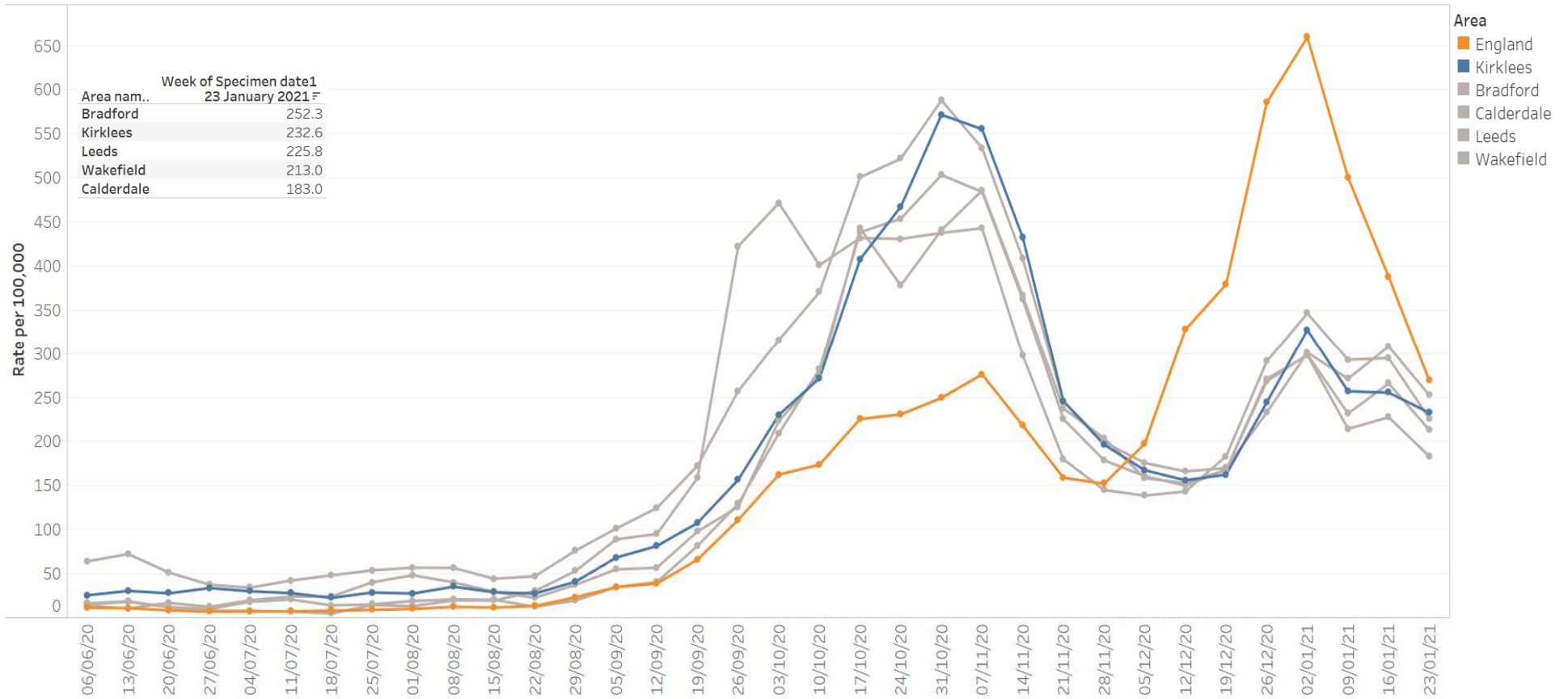


Weekly rates per 100,000 population

- Comparison between Kirklees and top ten ranked Upper Tier Local Authorities
- Ranking based on figure for week commencing 23/01/21; Kirklees ranked 97th (latest rate: 233 per 100,000)

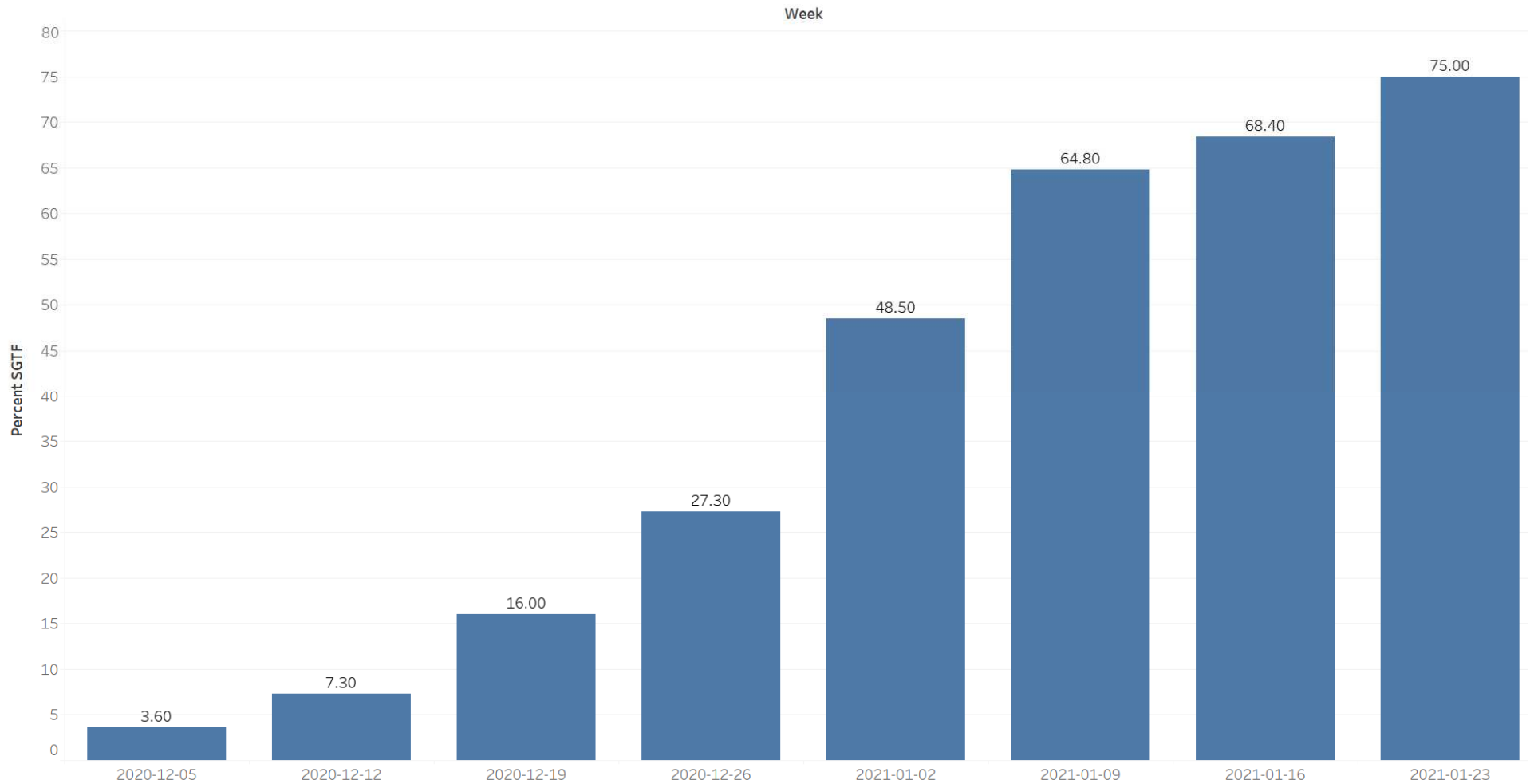


Weekly rates per 100,000 population, West Yorkshire



UK/Kent Variant in Kirklees

Three quarters of tested samples in Kirklees were the UK/Kent variant in the latest week



COVID-19 Communications

- Continue to encourage the hands, face and space messages reinforcing these throughout vaccine roll out and beyond.
- Encourage flu vaccination to ensure flu vaccination is administered at least 7 days before Covid-19 vaccination takes place
- Ensure National messages are tailored locally
- Expect National campaign messages:
 - Key message will be to encourage take up of vaccine (information on safety trials etc.)
 - Information about how to get vaccine (timings, bookings, locations)

Covid-19 Testing Update

The DHSC has approved care home staff to conduct self-test Lateral Flow Devices (LFDs) from their own homes. This means care home staff are now able to take and register their twice weekly LFD tests at home, before they arrive at the care home to start work. If staff test positive a confirmatory Polymerase Chain Reaction (PCR) test will be required.

Community Testing Update

There are currently four community testing sites across Kirklees for:

- **Critical workers who cannot work from home**

Individuals **must** be asymptomatic and consent to share their data with the national test and trace programme.

Confirmatory PCR test of a positive Lateral flow test, has been temporarily suspended nationally on 27/1/2021.

Targeted Testing

DPH led targeted testing has now merged into the community testing programme.

- The focus is on asymptomatic testing for those who are critical to support communities and who are at greater risk of catching the virus.

The focus reflects the local epidemiological picture.

Covid-19 Schools Update

Primary Schools:

The Medicines Healthcare Regulatory Agency (MHRA) has licensed self testing at home for Primary School staff.

- A confirmatory PCR is required for a positive lateral flow.

Secondary Schools and higher education

- Staff are tested once weekly.
- Students tested only on return, two tests 3-5 days apart.

Special Schools

As part of the “DPH testing offer”, under community testing, Public Health has commissioned Locala to do swabbing on pupils (with parental consent).

Care Home Testing Update

Care Home residents discharged from Hospital

- **Must** ensure only residents who are determined to be COVID-19 **infectious** are discharged to designated settings.
- Most people discharged to a care home will receive a COVID PCR test in the 48 hours prior to discharge. A negative test result should be communicated to care homes as part of the discharge information.

Those people who test **positive** would be required to isolate in a designated care setting for 14 days before transferring to their own care home.

However, a different approach is required for people who have previously tested positive. This is because a person can test positive for a period of time after first contracting the virus, even when no longer infectious to others. The criteria for the direct discharge of these persons to care homes are:

- Have tested positive in the past 90 days
- Have completed their 14-day isolation period
- And have a normal immune response

Covid-19 Vaccination update

Vaccinations taking place at:

- John Smiths Stadium
- Huddersfield Royal Infirmary
- Three community pharmacies
- All PCN's

Continuing to prioritise cohort 1-4 for first dose vaccines

Flu Immunisation Programme Update w/c 1/2/2021

Cohort	Kirklees Population size of Cohort	Kirklees Vaccinated total as at 01.02.21	Kirklees % Vaccinated	Vaccination Target
In clinical at risk groups	73610	41395	56.2%	75%>
Aged 65+	75439	61426	81.4%	75%>
Aged 50 to 65	53181	16285	30.6%	
Pregnant Woman	2295	1091	47.5%	75%>
Children 2 -3 yrs.	10578	4839	45.7%	75%>
All Primary school children	45176	25609	56.7%	75%>
Shielded patients & families	591	211	35.7%	75%>
Carers & families	9471	6543	69.1%	75%>
School year 7 children	5736	2974	51.8%	75%>
CCG staff (incl GB not counted elsewhere)	191	130	68.1%	100% Offer
Locala Staff (inc. Frontline staff and Care closer to Home frontline staff)				
Locala Staff (inc. Frontline staff and Care closer to Home frontline staff)	2620	2267	86.5%	100% Offer
YAS staff		TBC		100% Offer
LCD staff		TBC		100% Offer
SWYPFT Staff		42.8%		100% Offer
CHFT Staff		TBC		100% Offer
MYHT Staff		67.4%		100% Offer

Flu Immunisation Programme Update w/c 1/2/2021

Additional Groups counted within existing cohorts	Kirklees Population size	Kirklees Vaccinated total as at 01.02.21	Kirklees % Vaccinated	
Aged 80 and Over	19421	16347	84.2%	
Care Home Resident	2449	1912	78.1%	
Learning Disability Register	3315	1886	56.9%	
Dementia Register	3008	2465	81.9%	
SMI Register	4533	1847	40.7%	60%>
White British, Mixed British, Irish, Other White background Ethnic group	138043	99904	72.4%	
Mixed Black, Mixed Asian, Other Mixed Background Ethnic group	3190	1491	46.7%	
Bangladeshi, Indian, Pakistani, Other Asian Background Ethnic group	27608	11839	42.9%	
Total North African, Caribbean Other Black Background Ethnic group	2965	1602	54.0%	
Chinese, Other Background Ethnic group	2572	1293	50.3%	
Ethnicity not recorded	20200	12367	61.2%	